



TECHNICAL DATASHEET

# JRD Electric Pumps

JRD electric pumps for drainage of clean or slightly dirty water.



JRD Electric Pumps are ideal for draining clean or slightly dirty water (groundwater drainage, underground parks, civil construction, rainwater, fountains, and water courses). With stainless steel and cast iron components, they offer high performance and safety.

### APPLICATIONS

- Drainage of clean or slightly dirty water.
- Drainage of underground parks.
- Civil construction.
- Rainwater.
- Fountains and water courses.

## TECHNICAL DATA

### TECHNICAL SPECIFICATIONS

Type	Drainage of clean or slightly dirty water.
Maximum solid passage	10 mm
Max Temperature	40°C
Max. immersion depth	10 m
Electric cable	H07 RN-F (10 m)
Protection degree	IP 68
Insulation class	Class F

### FEATURES

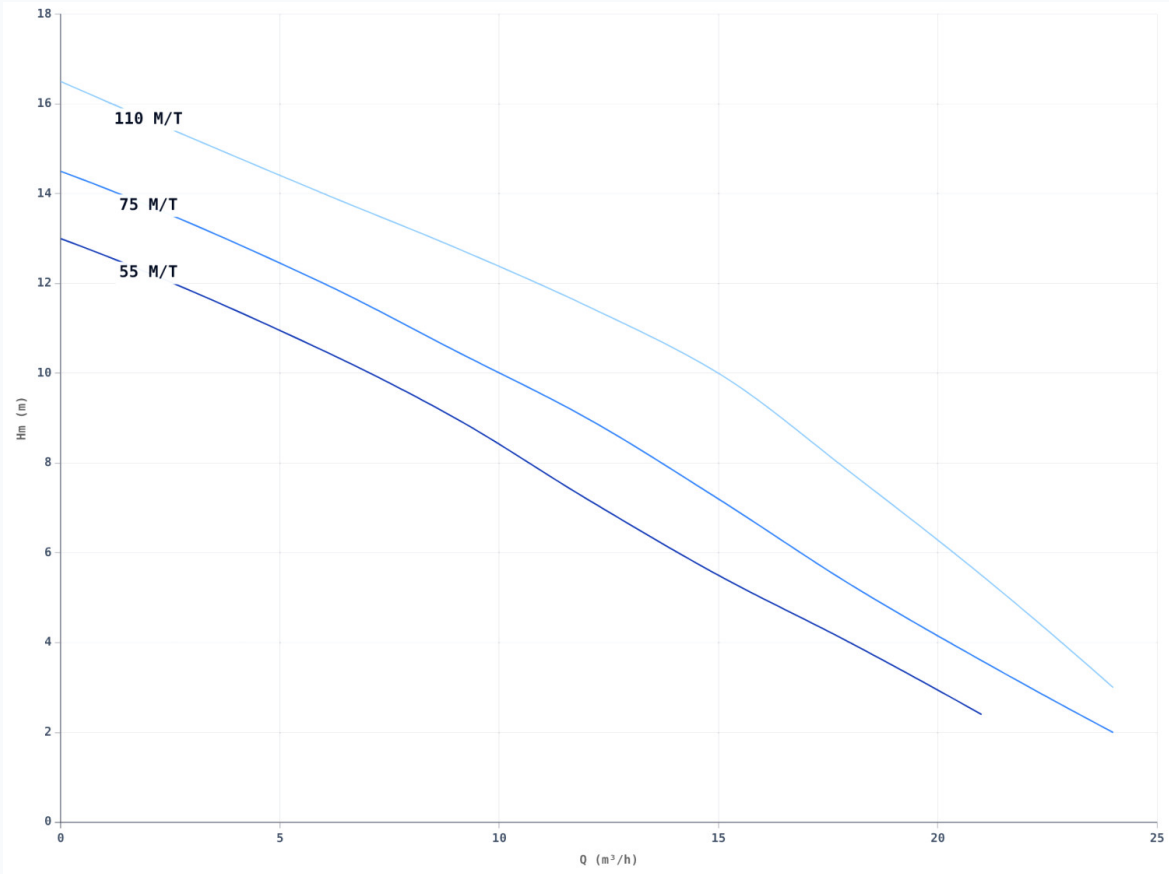
- Three-phase versions
- Three-phase versions with float switch option.

## DIMENSIONS

Model	Voltage	Power	Outlet	Weight
JRD 55M	230V	0.75 HP	1" 1/2	21 kg
JRD 55T	400V	0.75 HP	1" 1/2	20 kg
JRD 75M	230V	1.0 HP	1" 1/2	22 kg
JRD 75T	400V	1.0 HP	1" 1/2	21 kg
JRD 110M	230V	1.5 HP	1" 1/2	23 kg
JRD 110T	400V	1.5 HP	1" 1/2	21 kg



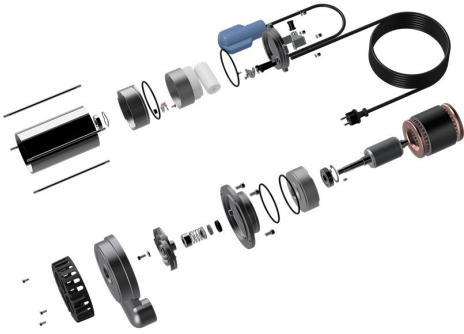
## PERFORMANCE CURVE (Q - HM)



Curvas de caudal (Q) vs. altura manométrica (Hm)

Model	kW	HP	μF / V	m³/h	0	6	9	12	15	18	21	24
					Hm (m)							
JRD 55 M/T	0,55	0,75	20 / 450		13,0	10,5	9,0	7,2	5,5	4,0	2,4	
JRD 75 M/T	0,75	1,00	30 / 450		14,5	12,0	10,5	9,0	7,2	5,3	3,6	2,0
JRD 110 M/T	1,10	1,50	40 / 450		16,5	14,0	12,8	11,5	10,0	7,8	5,5	3,0

## LIST OF MATERIALS



Pos.	Description	Material (Standard)
1	Stainless steel shaft	AISI 304
2	Stainless steel screws	AISI 304
3	Stainless steel outer jacket	AISI 304
4	Cast iron suction body	Cast iron
5	Cast iron impeller	Cast iron